

# Column lift DH-VOG.15.K1

1000 - 1500 Kg



# DHOLLANDIA





Heavy-duty steel platform, usually in hot-dip zinc plated finish



Air-permeable platform with steel grids. Reduces wind-resistance, improves fuel consumption and anti-slip protection.



Customization possible for larger fleets

## The safest lift to load and unload gas bottles

The DH-VOG.15.K1 is specially designed for the gas bottle distribution sector, and enables operators to unload and load gas bottles with maximum safety. The package is based on many years of experience in the industry. The guard rails along the open platform edges are designed to secure the bottles while lifting / lowering. The hinged ramp at the center of the outboard platform edge guarantees a smooth passage from the platform to the ground (and back).

The DH-VOG is available with following platforms:

- Standard: heavy-duty steel platform, in hot-dip zinc plated finish [OVU012.S]
- Optional: air-permeable platform with steel grids [OVP509.G]
- Optional: lightweight aluminum platform [OVU012.A]

Main configurations:

- Standard: manual opening and closing, supported by powerful torsion bars inside the platform
- Optional: hydraulic closure, maximizing the comfort and safety of the operator.

The K1 execution travels to vehicle floor height only. The K9 offers increased lifting height above the vehicle floor.

- + Lift specially designed for gas-bottle distribution. Wide acceptance in the gas industry worldwide. Functional & safety features based on many years of experience.
- + Most popular with hydraulic closure, optimizing the comfort and safety of the operator
- + Reinforced heavy-duty steel columns and cylinder beam, standard in hot-dip zinc plated finish
- + Easy to install to the vehicle body. No chassis constraints.





Automatically folding guard rails (here shown on a hydraulic closure lift [option OVH004])



Lateral fall-off protection



Electrical controls without sensitive electronic components

**PLATFORM**

- Robust, heavy-duty steel platform in hot-dip zinc plated finish, or weight-saving aluminium platform (option)
- Automatically folding guard rails on the L+R sides, and partially across the outboard platform edge (except the middle section where gas bottles are loaded and unloaded)
- Central fold-over bar between the 2 rear guard rails available as an option [OVP311]
- 1 hinged ramp [OVP120.S.M] between the 2 guard rails across the rear platform edge. The ramp can be raised as fall-protection, or laid open on the ground to serve as load ramp
- Lateral fall-protection edges at the L+R platform sides, to prevent accidental slipping of the gas bottles off the side edges of the platform
- Steel platform: hydraulic closure [OVP001.0 + OVH004] highly recommended; manual open / close [OVP001.B.1] advised against
- Alu platform [OVP002.1]: manual open / close (assisted by torsion bars); hydraulic closure as option [OVH004]

**FUNCTIONAL & MECHANICAL CHARACTERISTICS**

- Lower beam: operated by 1 single lift cylinder, mounted in a beam at the vehicle floor level, and a set of chains and pulleys
- Reinforced heavy-duty steel columns and cylinder beam, standard in hot-dip zinc plated finish
- Lifting above (1st) vehicle floor level available as an option K9 / E9 [OVU013]
- Flat platform, level ride
- Lift system equipped with mechanical Load Safety Device (chain rupture device)

**HYDRAULICAL CHARACTERISTICS**

- Single acting lift cylinder in the lower beam
- Robust pump unit 12V or 24V DC, supplied loose for mounting on the vehicle chassis
- Manual emergency operation on all electrovalves

**ELECTRICAL CHARACTERISTICS**

- Exterior control box with main battery disconnect switch and removable key [OAE030.BT.0]
- Electrical controls without sensitive electronic components
- Electric motor with thermal cut-out fuse

**FITTING**

- Columns standard prepared for bolt-on fitting to the rear frame of the body [OVF003.1]

**FINISH & MAINTENANCE**

- Low-maintenance bearings in all articulation points
- Lift frame in hot-dip zinc plated or "galvanised" finish. Best possible protection against corrosion [OVT121.F]
- Steel platform in hot-dip zinc plated finish. Best possible protection against corrosion [OVT121.P]

Disclaimer: data and images of lifts and options are indicative, and may vary in function of the lift execution and vehicle details. Ask confirmation from DHOLLANDIA.





OAE030.BT.0 - Exterior joystick control box + main battery isolator switch (+ turn switch)



OAE001 - 2-button wander lead with spiral cable



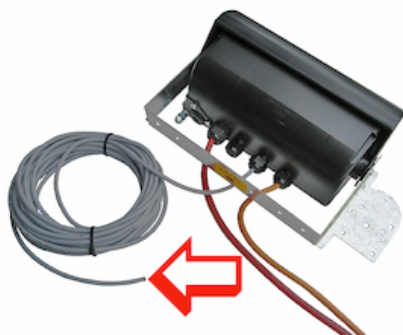
OAE015.O - 2 function toggle switch control (option)



OAE041.BP.0 - Arctic push-button control box + main battery isolator switch (+ push button)



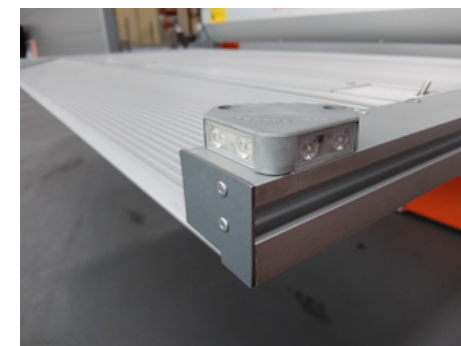
OAE500 - VEHH plug connection for dashboard switch



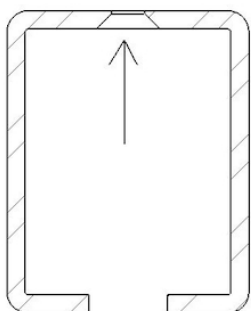
OAE501.12 - VEHH wire connection for dashboard switch 12 m



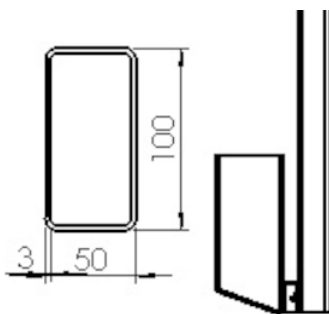
OAE503.1 - Cabin switch (single use)



OVE201.C - Flashing platform lights, battery powered



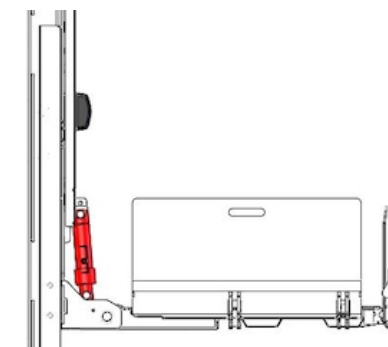
OVF003.1 - Bolt-on fitting through column VB15-VO.K1



OVF200.ST - Steel bumper with tube 50 x 100mm for DH-V\*



OVF202.01 - Diagonal bumper support for DH-VOxxK1



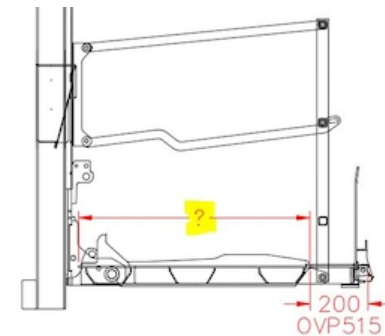
OVH004 - 1 tilt cylinder, no adjustable tilt VOC-VB4

OVP001.0 - Steel platform on DH-V\* lift

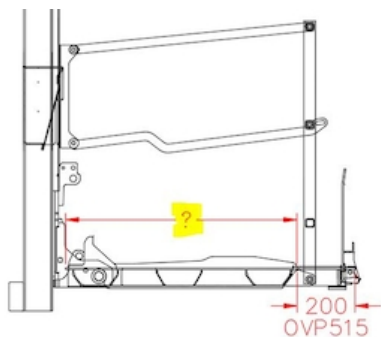


OVP001.B.1 - Steel platform on DH-V\* (manual closure)

OVP002.1 - Aluminium platform on DH-V\* lift



OVP012.S - Extension of the steel platform per 100 mm

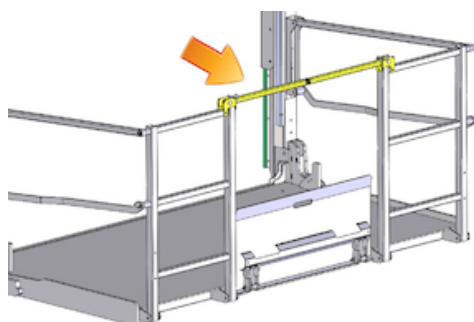


OVP012.A - Extension of aluminium platform per 100 mm

OVP120.S.M - Suppl.1 hinged ramp in centre (steel)

OVP120.A.M - Suppl.1 hinged ramp in centre (alu)

OVP120.A.M.L - Suppl.1 hinged ramp in centre (alu - long)



OVP311 - Central fold-over bar on OVU012



OVP354 - Chain fixation on rails OVU012



OVP509.G - Open mesh platform + steel grids



OVP509.G2 - Air permeable platform + steel grids T2



OVP515 - VO platform with extended mid section



OAT020 - Reflecting platform flags type TÜV



OAT023 - Reflecting platform flags type Export Red



OVT110.1 - Aluminium platform of the DH-VO& K1 / VB& E1 in anodised finish



OVU013.1 - Execution VO...K9 (T1) above floor level

