

Fold-away lift DH-RP.15

1000 - 1500 Kg



DHOLLANDIA





Very stable construction with wide arm width for mounting outside of the chassis beams



Hot-dip zinc plated or "galvanised" finish. Best possible protection against corrosion [OAT104].

Light fold-away lift with half-dip platform ride

The DH-RP.15 form a new generation of medium-duty fold-away lifts, equipped with a **wide arm center and twin lift cylinders for maximum platform stability**. They combine **superior finish** with maximum **operational reliability** and **great ease of use**. Using easy controls and fast deployment, the DH-RP.15 are extremely fit for the medium-duty distribution transport and the short term truck rental business.

In its travel position, the DH-RP.15 is safely stored under the vehicle. This lift is extremely fit for operations with frequent access to loading docks, or with frequent fork lift loading and unloading, or other situations where frequent, quick direct access to the cargo space is essential.

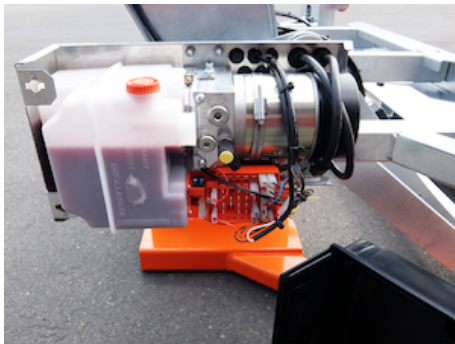
The DH-RP.15 is equipped with **Power-Down** (double acting descend), to prepare it for the harshest winter conditions.

- + Clever design offering maximum platform stability and operational reliability, with a minimal proper weight
- + Easy to fit. Bolted connections possible between lift frame and mounting plates; and between mounting plates and vehicle chassis.
- + Available with POWER-DOWN function, and arctic oil (-51°C). Suitable for the coldest winter temperatures.
- + Hot-dip zinc plated or "galvanised" finish. Best possible protection against corrosion [OAT104].





Manual emergency operation on all electrovalves



Pump unit 12V or 24V DC, accessible on 4 sides for easy maintenance



Arctic exterior control box with IP67 rated sealed contacts, and a main battery isolator switch with removable key [OAE041.BP]

PLATFORM

- Reinforced steel platform heel with aluminium point, or weight saving full aluminium platform [option OAP601]
- Steel base section standard in hot-dip zinc plated finish [OAT127.S]
- Alu platform or platform sections in natural finish
- The folding- and unfolding of the platform and its foldable point is assisted by powerful torsion springs

FUNCTIONAL & MECHANICAL CHARACTERISTICS

- Half-dip ride. Progressive platform tilt while lifting / lowering
- Alternative available with level-ride and automatic tilt at ground level. See RC.15 and RM.20
- Fixed stabiliser rods, no adjustable platform orientation

HYDRAULIC CHARACTERISTICS

- 2 lift cylinders for maximum platform stability
- Electrical safety valves on all cylinders
- Manual emergency operation on all electrovalves
- Cylinder piston rods in hard-chromed stainless steel
- Cylinders equipped with rubber gaiters and lubrication
- Pump unit 12V or 24V DC, accessible on 4 sides for easy maintenance

ELECTRICAL CHARACTERISTICS

- Arctic exterior control box with IP67 rated sealed contacts, and a main battery isolator switch with removable key [OAE041.BP]
- Electrical controls without sensitive electronic components
- Safe exterior controls with compulsory 2-hand operation
- Electric motor with thermal cut-out fuse

FITTING

- Bolt-on mounting plates for quick and easy fitting [OAM010]
- Premounted mounting plates at a fixed center distance [OAM011]
- Very stable construction with wide arm width for mounting outside of the chassis beams
- Integrated floor plate for flush mounting available as an option [OAM003 / 004]
- Robust bed-extension plate with side ladders available as option [OAM051 + OAM052]
- Fixed 3-piece bumper bar available as option [OAF100.ST]
- Fixed 3-piece bumper bar + integrated light boxes available as an option [OAF106]

FINISH & MAINTENANCE

- Low-maintenance bearings in all articulation points, plus grease nipples
- Hot-dip zinc plated or "galvanised" finish. Best possible protection against corrosion [OAT104].

Disclaimer: data and images of lifts and options are indicative, and may vary in function of the lift execution and vehicle details. Ask confirmation from Dhollandia.



TECHNICAL CHARACTERISTICS

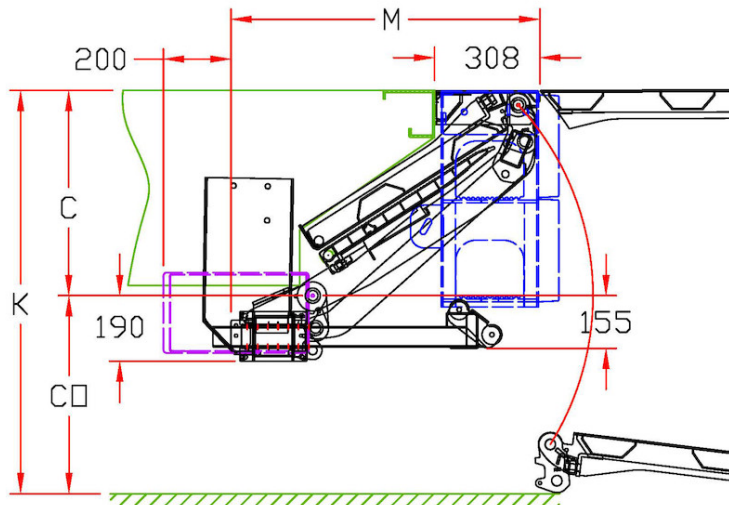
DH-RP.15

| | |
|--|---|
| Lift frame | 120 x 120 mm |
| Cylinders | 2 lift cylinders + 2 fixed stabilisers |
| Type of ride | Progressive inclination while lifting/lowering (half-dip ride) |
| Platform material | Steel/alu or Alu/alu |
| Standard platform depths | 1270 - 1450 mm (1450 mm on request) |
| Standard platform widths | 2000 - 2200 mm Other widths on request [option OAP303] |
| Lift arm lengths | 700 - 800 mm |
| Lift arm widths | 1100 mm |
| Mounting | - Flush-mounted floor plate [OAM003] - Bed extension plate + side stairs [OAM051 + OAM052] |
| Standard control unit | OAE030.BT |
| Standard finish of the lift frame | Hot-dip zinc plated finish [OAT104] |

MOUNTING DIMENSIONS

DH-RP.15

| | | |
|-----------------|------------|------------|
| ARM | 820 | ? |
| K max. | 1300 | on request |
| K min. | 990 | |
| CT max. | 600 | |
| CT std. | 600 / 500 | |
| COT max. | 700 | |
| M | at C max. | 905 |
| M | at C min. | 985 |
| V max. | 1270 | 1450 |





OAE001 - Kit 2-button wander lead + spiral cable



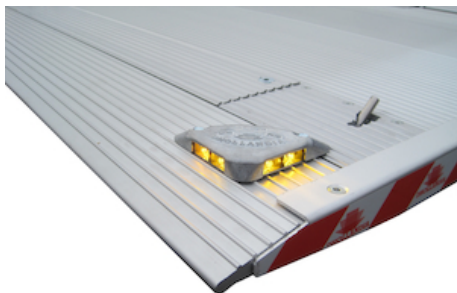
OAE015.O - Toggle switch controls lift/lower (option)



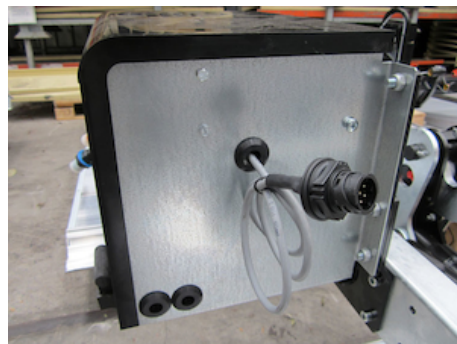
OAE015.PR - Toggle switch control lift/lower (principal)



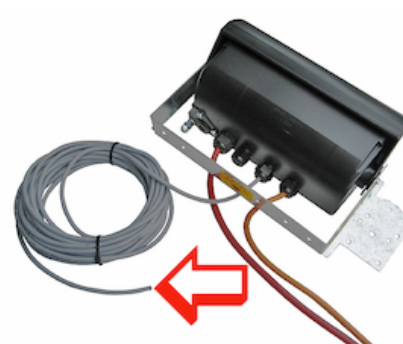
OAE041.BP - Arctic control box + E2007 + push button



OAE200 - Platform lights DHOLLANDIA 12V/24V



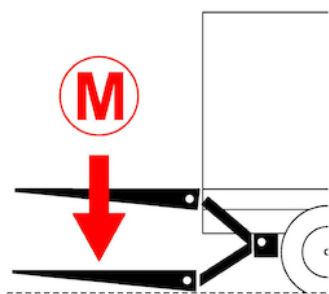
OAE500 - Wire connection VEHH



OAE501.12 - Cable VEHH -12m



OAE503 - Cabin switch



OAH025.1 - POWER DOWN function + 1 starter solenoid



OAM010 - Mounting plate bolt-on



OAM011 - Mounting plate fixed



OAM003 - Rear floor traverse RC10/RC20/RM20



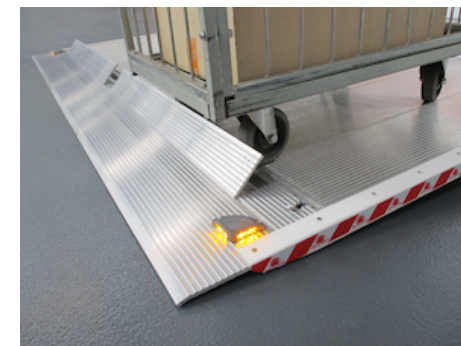
OAM051 - Bed extension plate (N-A)



OAM052 - 1 side ladder for OAM051



OAP100.M - Manual rollstops in platform point



OAP100.A - Automatic rollstops in platform point



OAF100.ST - Fixed 3-piece bumper STEEL mounted on lift frame



OAF106 - 3-piece bumper bar + rear light box



OAT020 - Platform flags TÜV type



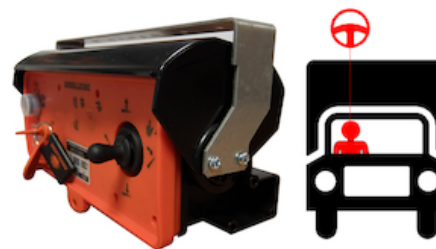
OAT023 - Reflecting platform flags export



OAT136 - Anodisation DHS...alu/alu



OAT137 - Anodisation of alu platform point



OAU100 - Control box left (right steer wheel UK)