

Cantilever lift DH-LM.30

1500 - 3000 Kg



DHOLLANDIA





Weight-saving aluminium platform with anti-slip surface



Robust, reinforced steel platform for use in hostile-environment conditions



Long platforms available, forming the rear closure of the body aperture

Powerful, robust lift for the intensive distribution

The cantilever lift DH-LM.30 is a **powerful lift** for intensive, heavy-duty tasks in "hostile environment" circumstances. It is ideal for the most demanding applications in the regular transport business, such as **supermarket & food distribution**.

The robust frame with reinforced articulation pins and larger cylinders is primarily designed for lift capacities of 2500 to 3000 kg, but is also available as upgraded 1500-2000 kg version.

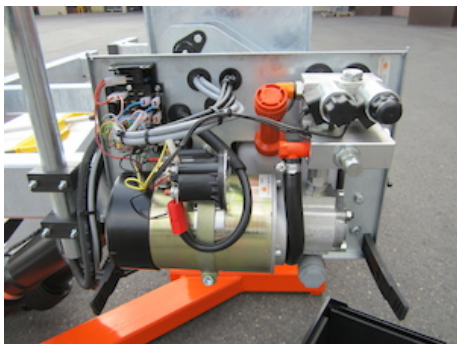
The DH-LM.30 can be equipped with very long platforms (3000 mm long and even longer foldable platforms), hence it can easily form the rear closure of the vehicle body. The DH-LMR launched in 2014, is a quick-fit system with bolt-on clamps for trailer and semi-trailer chassis.

- + Robust, powerful lift for heavy-duty applications in "hostile environment" conditions. Ideal for supermarkets, food & drinks distribution.
- + Reinforced lift mechanism and platform, suitable for lift capacities of 2500-3000 kg. Also available as upgraded 1500-2000 kg execution for platforms longer than 2250 mm.
- + Platform can form rear closure of body aperture (single-piece platforms up to 3000 mm; folding platforms up to 4500 mm).
- + Quick-fit execution DH-LMR available for installation on trailer & semi-trailer I-beam chassis.
- + Hot-dip zinc plated or "galvanised" finish. Best possible protection against corrosion [OAT104].





Manual emergency operation on all electrovalves



Pump unit 12V or 24V DC, accessible on 5 sides for easy maintenance



Electrical controls without sensitive electronic components

CHARACTERISTICS

DH-LM.30

PLATFORM

- Robust heavy-duty steel platform, or weight-saving aluminium platform
- 2000 mm in zinc primer.
- Aluminium platform with profiles oriented in lateral direction [type H...]
- Alu platform or platform sections in natural finish
- Synthetic rollers for the contact between the platform and the ground

FUNCTIONAL & MECHANICAL CHARACTERISTICS

- Conical platform. Level ride with automatic tilt at ground level
- Heavy duty lift frame, suitable for high capacities and long platforms
- Platform tilt adjustable at any position from the exterior controls

HYDRAULIC CHARACTERISTICS

- 2 lift cylinders for maximum platform stability
- 2 tilt cylinders with spring assisted platform opening
- Electrical safety valves on all cylinders
- Manual emergency operation on all electrovalves
- Cylinder piston rods in hard-chromed stainless steel
- Cylinders equipped with rubber gaiters and lubrication
- Pump unit 12V or 24V DC, accessible on 5 sides for easy maintenance

ELECTRICAL CHARACTERISTICS

- Exterior control box with main battery isolator switch and removable key [OAE030.BT]
- Safe exterior controls with compulsory 2-hand operation
- Electrical controls without sensitive electronic components
- Electric motor with thermal cut-out fuse

FITTING

- Bolt-on mounting plates for quick and easy fitting [OAM010]
- Fixed 3-piece bumper bar available as option [OAF100.ST]
- DH-LMR quick-fit execution for trailer and semi-trailer I-beam chassis available as an option [OAU009]

FINISH & MAINTENANCE

- Low-maintenance bearings in all articulation points, plus grease nipples
- Hot-dip zinc plated or "galvanised" finish. Best possible protection against corrosion [OAT104].

Disclaimer: data and images of lifts and options are indicative, and may vary in function of the lift execution and vehicle details. Ask confirmation from Dhollandia.



TECHNICAL CHARACTERISTICS

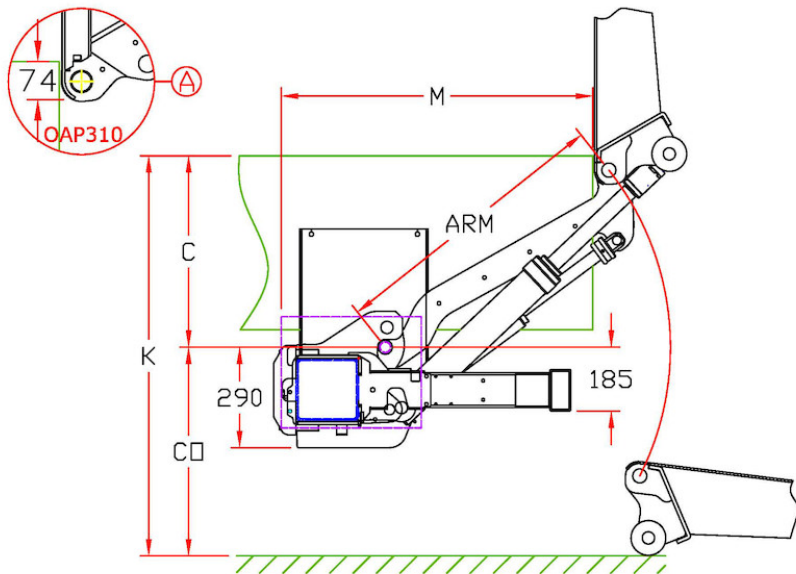
DH-LM.30

Lift frame	180 x 180 mm
Cylinders	2 lift cylinders + 2 tilt cylinders
Type of ride	Wedged platform. Level ride + automatic tilt at ground level
Platform material	Aluminium or steel
Platform overlap under floor	-74 mm
Standard platform depths	Steel: 1750 - 2000 mm (max. 4500 mm) Alu: 1800 - 2000 mm (max. 4500 mm)
Standard platform widths	Steel: 2350 - 2480 - 2500 - 2520 - 2550 mm Alu: Variable up to 2550 mm in steps of 5 mm
Lift arm lengths	820 - 880 - 940 - 1000 - 1100 - 1200 mm
Lift arm widths	800 - 1150 - 1300 - 1550 mm (...-2014) 800 - 1200 - 1300 - 1550 mm (2015-...)
Standard control unit	OAE030.BT
Standard finish of the lift frame	Hot-dip zinc plated finish [OAT104]

MOUNTING DIMENSIONS

DH-LM.30

ARM	820	880	940	1000	1100	1200	
K max.	1330	1420	1500	1590	1730	1870	
C max.	680	730	780	820	900	980	
C min.	300	300	350	400	450	500	
CO max.	650	690	720	770	830	890	
M	at C max.	770	800	835	880	940	1000
M	at C min.	1030	1095	1140	1190	1275	1365





OAE001 - Kit 2-button wander lead + spiral cable



OAE041.BP - Arctic control box + E2007 + push button



OAE043.BT - Arctic control box + E2007 (Toggle switches)



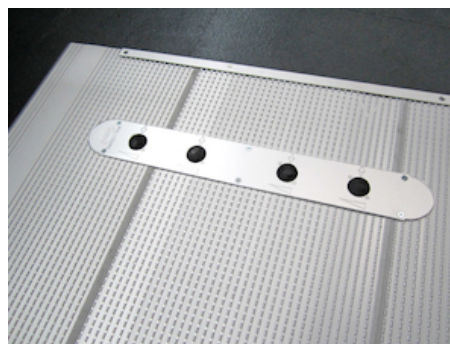
OAM025 - adjustable mounting bracket for control box



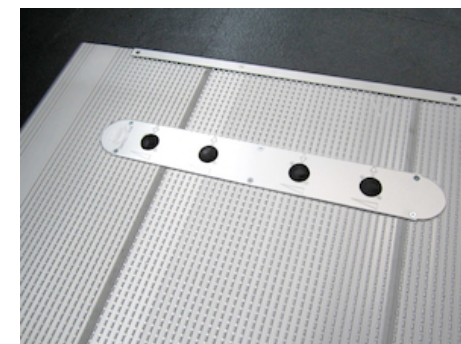
OAE031.Z - Control box 3+1 buttons without battery isolator



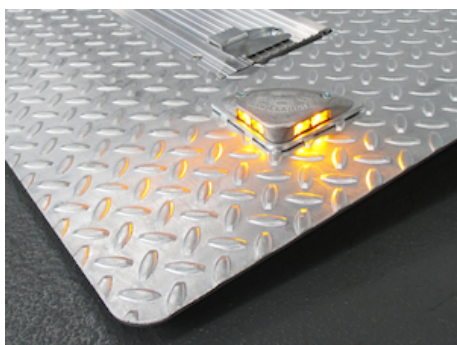
OAM026 - Fitting support control box 3+1 BTN type B



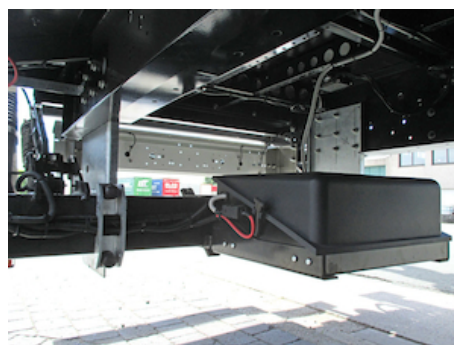
OAE060 - 4-button foot controls on the platform



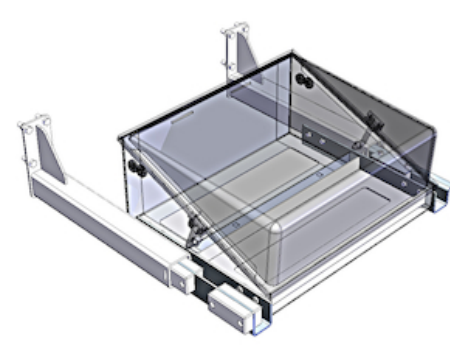
OAE064 - 4-button foot controls + reed sensor



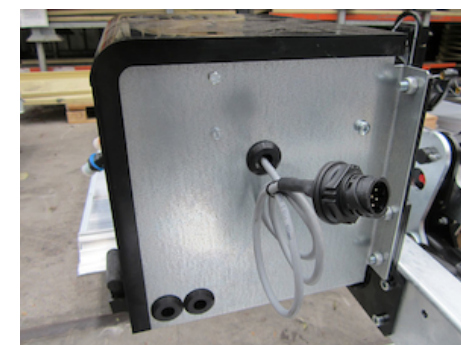
OAE200 - Platform lights DHOLLANDIA 12V/24V



OAE405 - Battery box mounted on lift frame (suppl)

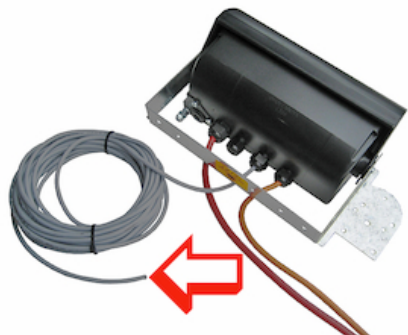


OAE407 - Mounting support for battery box on chassis



OAE500 - Wire connection VEHH





OAE501.12 - Cable VEHH -12m



OAE502 - Reed sensor on platform



OAE503 - Cabin switch



OAF001 - Lift arm for trailer coupling LMK



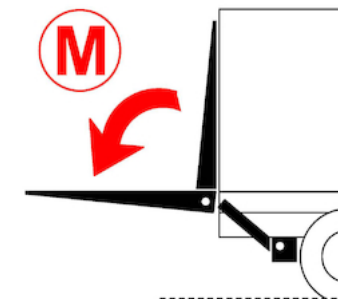
OAF100.ST - Fixed 3-piece bumper STEEL mounted on lift frame



OAF103 - Preparation bumper for ball coupling



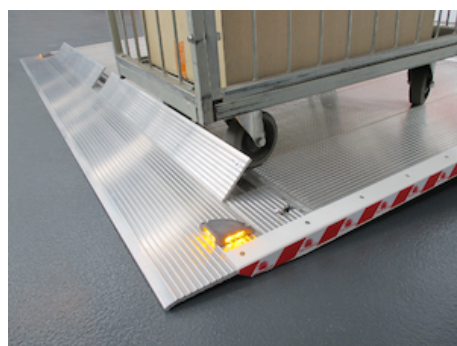
OAH013.60.LE - Hydr.stabilising leg straight 4T LE...mm



OAH026 - Double acting tilt cylinders



OAP100.M - Manual rollstops in platform point



OAP100.A - Automatic rollstops in platform point



OAP021 - 1 STD. side ramp (type A) for OAP020



OAP202.LR - 2 hinged safety rails L+R

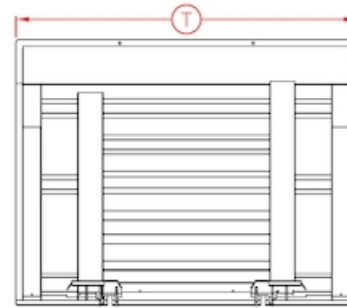




OAP302.A - Extension platform ALU / DHESU per 10cm



OAP302.S - Extension STEEL platform per 10cm



OAP303 - Platform width out of standard



OAP304 - Steel platform flat between the main beams



OAP305 - Steel platform with fully flat exterior side



OAP403.1 - Foldable point on DH-L* platform, full width



OAP404.1 - Reinforced foldable point, full width



OAP420 - Without platformlock on client request



OAP421.L - Standard lock on ALU platform L



OAP421.R - Standard lock on ALU platform R

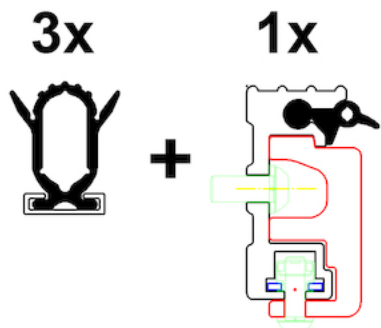


OAP422.L - Standard lock on STEEL platform L



OAP422.R - Standard lock on STEEL platform R





OAT001 - Rubber platform seals high - 4 sides



OAT003 - Rubber platform seals 25mm - 3 sides



OAT020 - Platform flags TÜV type



OAT023 - Reflecting platform flags export



OAT124 - GALVA finish for steel DHL* platform



OAT131 - Publicity plate for galva platform, supplied loose



OAT135 - Anodisation of alu platform



OAU001 - Execution LM.30 + adjustable bumper bar



OAM024 - Access step for mounting on bumper tube



OAU004 - DH-LV for draw-bar coupling + fold-away bumper



OAU009 - DH-LMR execution for I-beam chassis



OAU100 - Control box left (right steer wheel UK)