

Cantilever lift DH-LM.15

1000 - 1500 Kg



DHOLLANDIA





Tail lift for 1000-1500 kg lift capacity with minimal proper weight, offers maximum pay-load on trucks of 7.5-12T GVW



Very versatile lift available with a large choice of value-adding options and extra equipment.

The DH-LM.15 was launched in 2012 as missing link between the 1000 and 2000 kg capacity lifts. Since then, it has become extremely popular as **ideal weight saving lift for medium capacity trucks** of 7,5T to 12T GVW.

It is considerably lighter and requires less overhang than the DH-LM.20; yet it is stronger and more robust than the DH-LM.10. It is recommended to use the DH-LM.15 instead of DH-LM.10 / LMQ.10 with 850 mm long lift arms and for 1000 kg lifts with platform depth above 1600 mm.

The mounting plates are bolt-on and fully adjustable in width.

- + Powerful, stable 4-cylinder tail lift for 1000-1500 kg lift capacity.
- + Reliable weight champion in the 1500 kg class. Offers maximum pay-load on medium-duty trucks of 7.5-12T GVW.
- + Very versatile lift available with a large choice of value-adding options and extra equipment.
- + Hot-dip zinc plated or "galvanised" finish. Best possible protection against corrosion [OAT104].

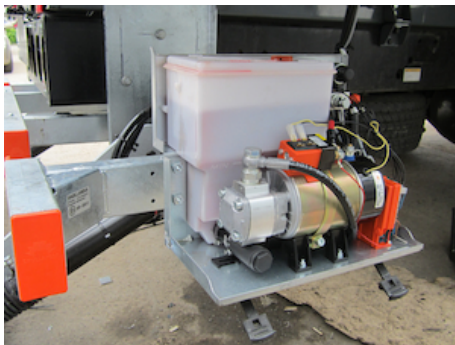




Manual emergency operation on all electrovalves



Control unit integrated in cover of pump unit, with main battery isolator switch and removable key [OAE039.BP]



Pump unit 12V or 24V DC, accessible on 4 sides for easy maintenance

PLATFORM

- **Light-weight aluminium** platform, or **heavy-duty steel** platform
- Aluminium platform with profiles oriented in longitudinal direction [type V...], and a milled anti-slip protection pattern
- Alu platform or platform sections in natural finish
- 2000 mm in zinc primer.
- Synthetic rollers for the contact between the platform and the ground

FUNCTIONAL & MECHANICAL CHARACTERISTICS

- Intelligent design with maximum weight saving
- Conical platform. Level ride with automatic tilt at ground level
- Platform tilt adjustable at any position from the exterior controls

HYDRAULIC CHARACTERISTICS

- 2 lift cylinders for maximum platform stability
- 2 tilt cylinders with spring assisted platform opening
- Electrical safety valves on all cylinders
- Manual emergency operation on all electrovalves
- Cylinder piston rods in hard-chromed stainless steel
- Cylinders equipped with rubber gaiters and lubrication
- Pump unit 12V or 24V DC, accessible on 4 sides for easy maintenance

ELECTRICAL CHARACTERISTICS

- Control unit integrated in cover of pump unit, with main battery isolator switch and removable key [OAE039.BP]
- Electrical controls without sensitive electronic components
- Safe exterior controls with compulsory 2-hand operation
- Electric motor with thermal cut-out fuse

FITTING

- Bolt-on mounting plates for quick and easy fitting [OAM010]
- Fixed 3-piece bumper bar available as option [OAF100.ST]

FINISH & MAINTENANCE

- Low-maintenance bearings in all articulation points, plus grease nipples
- Hot-dip zinc plated or "galvanised" finish. Best possible protection against corrosion [OAT104].

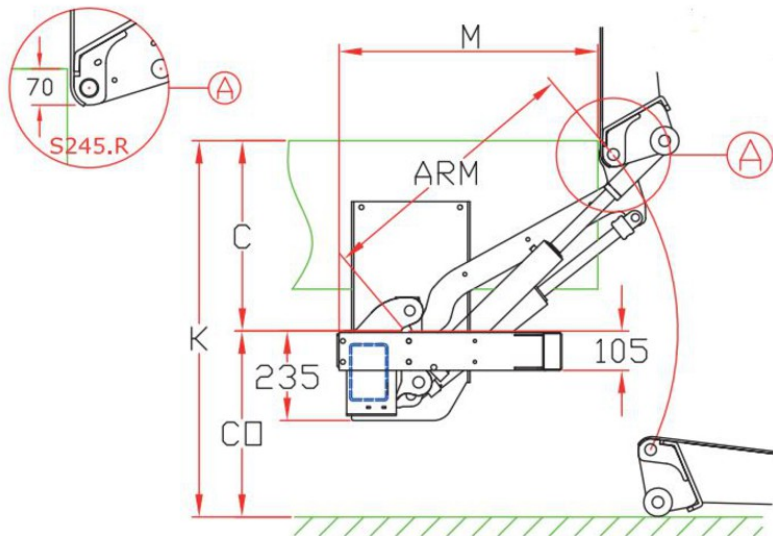
Disclaimer: data and images of lifts and options are indicative, and may vary in function of the lift execution and vehicle details. Ask confirmation from Dhollandia.



TECHNICAL CHARACTERISTICS

DH-LM.15

Lift frame	100 x 150 mm
Cylinders	2 lift cylinders + 2 tilt cylinders
Type of ride	Wedged platform. Level ride + automatic tilt at ground level
Platform material	Aluminium or steel
Platform overlap under floor	-65 mm
Standard platform depths	Steel: 1500 - 1750 mm (max. 2000 mm) Alu: 1600 - 1800 mm (max. 2000 mm)
Standard platform widths	Steel: 2350 - 2480 - 2500 - 2520 - 2550 mm Alu: Variable up to 2550 mm in steps of 5 mm
Lift arm lengths	720 - 800 - 880 mm
Lift arm widths	1150 - 1300 mm (...-2014) 1200 mm (2015-...)
Standard control unit	OAE039.BP
Standard finish of the lift frame	Hot-dip zinc plated finish [OAT104]



MOUNTING DIMENSIONS

DH-LM.15

ARM	720	800	880	960 (1)
K max.	1190	1295	1400	1460
C max.	605	665	720	750
C min.	300	350	400	450
CO max.	585	630	680	710
M	at C max.	590	650	705
M	at C min.	820	885	950

(1) ARM 960 mm only available on special request.





OAE001 - Kit 2-button wander lead + spiral cable



OAE030.BT - Controls + battery switch + turn switch



OAE041.BP - Arctic control box + E2007 + push button



OAE043.BT - Arctic control box + E2007 (Toggle switches)



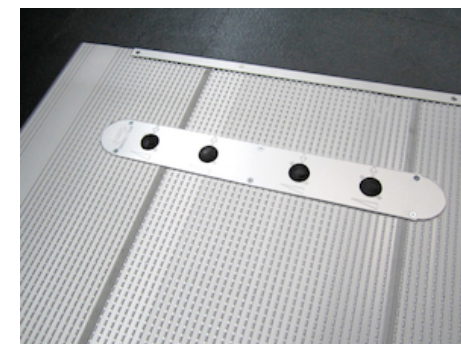
OAM025 - adjustable mounting bracket for control box



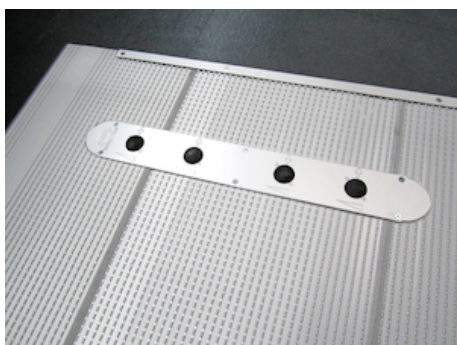
OAE031.Z - Control box 3+1 buttons without battery isolator



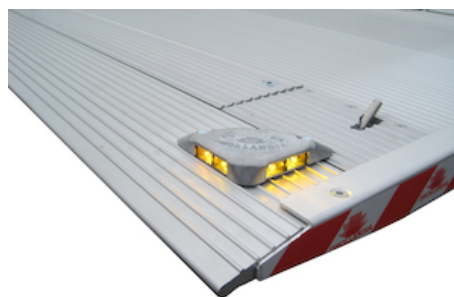
OAM026 - Fitting support control box 3+1 BTN type B



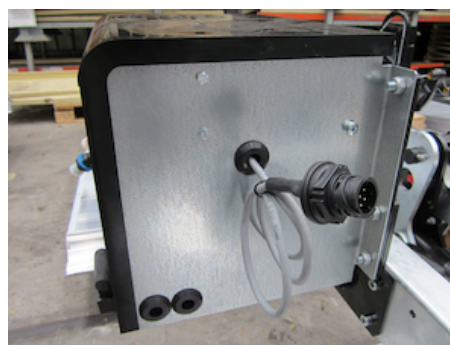
OAE060 - 4-button foot controls on the platform



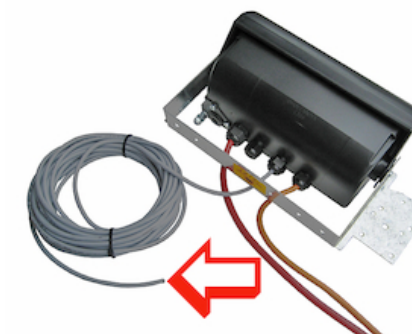
OAE064 - 4-button foot controls + reed sensor



OAE200 - Platform lights DHOLLANDIA 12V/24V



OAE500 - Wire connection VEHH



OAE501.12 - Cable VEHH -12m



OAE502 - Reed sensor on platform



OAE503 - Cabin switch



OAF001 - Lift arm for trailer coupling LMK



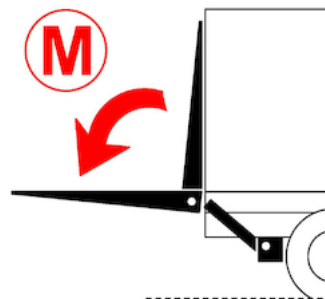
OAF100.ST - Fixed 3-piece bumper STEEL mounted on lift frame



OAF103 - Preparation bumper for ball coupling



OAH013.60.LE - Hydr.stabilising leg straight 4T LE...mm



OAH026 - Double acting tilt cylinders



OAP100.M - Manual rollstops in platform point



OAP100.A - Automatic rollstops in platform point



OAP018.01 - Platform DH-LM in meshed steel

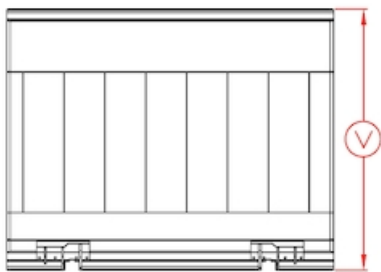


OAP021 - 1 STD. side ramp (type A) for OAP020

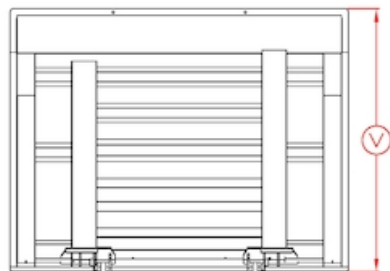


OAP202.LR - 2 hinged safety rails L+R

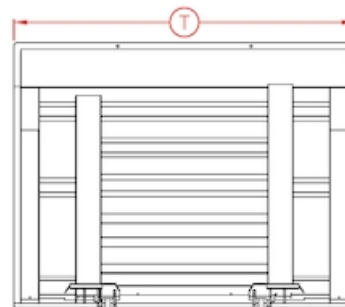




OAP302.A - Extension platform ALU / DHEU per 10cm



OAP302.S - Extension STEEL platform per 10cm



OAP303 - Platform width out of standard



OAP403.1 - Foldable point on DH-L* platform, full width



OAP420 - Without platformlock on client request



OAP421.L - Standard lock on ALU platform L



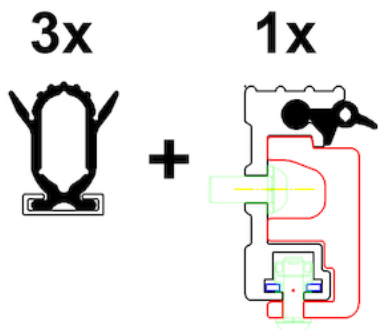
OAP421.R - Standard lock on ALU platform R



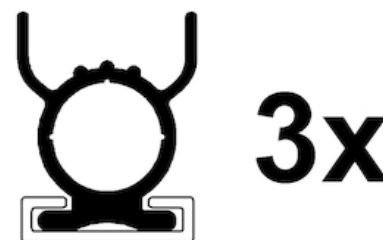
OAP350.H02 - ALU platform type H02 >1500kg



OAT135 - Anodisation of alu platform



OAT001 - Rubber platform seals high - 4 sides



OAT003 - Rubber platform seals 25mm - 3 sides



OAT020 - Platform flags TÜV type





OAT023 - Reflecting platform flags export



OAU100 - Control box left (right steer wheel UK)

